

## Pocket Wifi (75Mbps) Manual

※ We will try to provide the device with full battery every time, therefore to avoid any inconvenience, please don't forget to re-charge your device before using. 出

### □ Power on & connection

----Pocket Wifi (75Mbps)

1. Please press the power button for 5 seconds to turn on the device.
2. Device will automatically show "Searching", and it will connect to internet.



\*1. Below button is power button



\*2. Once you see the mark next to "WiFi" its internet connection is completed.

---- PC

1. Please find "Network and sharing center" from the start menu bar, Then click Connect net work.
2. Select SSID "GL06P-----"
3. Input the WEP key number.

((SSID & WEP key is mention on the back of device))

----iPhone/iPad

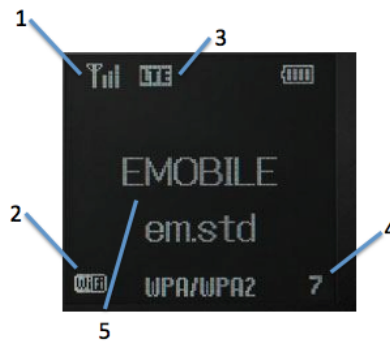
1. Select icon and turn on the Wi-fi
2. Select SSID "GP02-----"
3. Input the WEP key number.

((SSID & WEP key is mention on the back of device))

### □ How to charge the device

1. Connect to PC by USB cable. Full charge takes 9 hours.
2. Connect to wall socket. Full charge takes 4 hours.

□ How to see the display



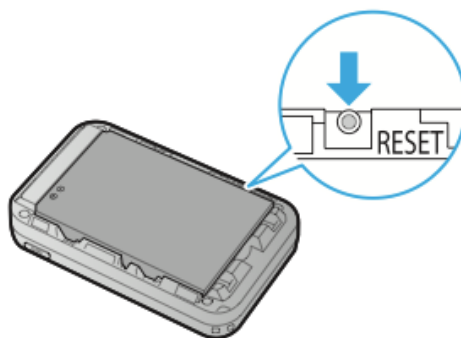
1. Shows the cellular radio wave.
2. Shows the condition of WiFi.  
-If the mark isn't appeared you can not connect to your device.
3. Shows the condition of internet connection.  
-If the mark isn't appeared device isn't connected to internet.
4. Shows the number of device connected.
5. Shows the device condition.

<b>EMOBILE</b>	<b>Connected Carrier will appear.</b>	<b>Insert USIM</b>	<b>Device is not recognizing the SIM card.</b>
<b>Battery Error</b>	Device is not recognizing the battery or the battery has some problem.	<b>PIN Lock</b>	Please press "9999" one time. Or please contact to our support number.
<b>Low Battery</b>	Battery is almost no power.	<b>PUK Lock</b>	Please contact to our support number.
<b>No Service</b>	It's out of range.	<b>Invalid SIM</b>	Please contact to our support number.

How to reset your device

////////Noted////////

Please try it only when you are not able to connect internet for a while.



1. Press and roll down the back side cap.
2. Take off the cap.
3. There is a "RESET button" next to the battery.
4. Press the "Reset button" by small thing.

(Please don't press it too much)

Even though you press it, password has no change.

Item should be return

- Pocket Wifi device
- USB cable
- AC charger
- Mobile battery
- Cloth case
- This Manual

Support Center

- 050-5881-3223 / Abe